

Standard Model extensions for PV electron scattering, $g-2$, EDM: Overview

J. ERLER(*)

*School of Natural Sciences, Institute for Advanced Study
Einstein Drive, Princeton, NJ 08540, USA*

ricevuto il 25 Ottobre 2011; approvato il 5 Maggio 2012
pubblicato online il 3 Luglio 2012

Summary. — I review how various extensions of the Standard Model, in particular supersymmetry and extra neutral gauge bosons, may affect low-energy observables, including parity-violating electron scattering and related observables, as well as electric and magnetic dipole moments.

PACS 12.60.Jv – Supersymmetric models.

PACS 13.40.Em – Electric and magnetic moments.

PACS 13.60.-r – Photon and charged-lepton interactions with hadrons.

PACS 14.70.Pw – Other gauge bosons.

1. – The Standard Model and beyond

The basic structure of the Standard Model (SM) has been well established through the discovery of weak neutral currents, through parity-violating deep inelastic scattering [1], and through the discovery of the W and Z bosons. Moreover, the SM has been established as a spontaneously broken quantum field theory—even though the Higgs boson has not been discovered, yet—through the very high precision Z factories LEP 1 and SLC. Finally, we are closing in on the Higgs boson. Figure 1 shows the probability distribution of the Higgs mass, M_H , within the SM, based on all available electroweak (EW) precision data and search results from LEP 2 and the Tevatron. The remaining window, $115 \text{ GeV} \lesssim M_H \lesssim 160 \text{ GeV}$, is fully consistent with the negative search results at the LHC in almost the entire range, $145 \text{ GeV} \lesssim M_H \lesssim 470 \text{ GeV}$, and also with some 2σ level excesses below it [2]. The flip side of this spectacular success of the SM are depressed expectations for physics beyond it. There are some smaller deviations but nothing conclusive has arisen so far. Of course, neutrino masses and mixings indicated by neutrino oscillations are often

(*) *Permanent address:* Departamento de Física Teórica, Instituto de Física, Universidad Nacional Autónoma de México, 04510 México D.F., México. E-mail: erler@fisica.unam.mx

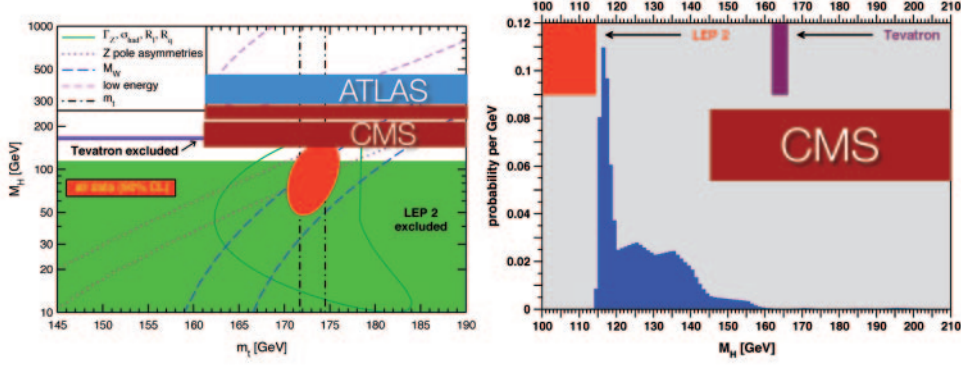


Fig. 1. – (Colour online) Left: contours of M_H as a function of the top quark mass, m_t , for various EW data sets. The red ellipse gives the 90% CL allowed region by all precision data. Also indicated are the 95% exclusion intervals for M_H from LEP 2, the Tevatron, ATLAS and CMS. Right: normalized probability distribution of M_H based on the combination of EW precision data with LEP 2 and Tevatron search results. The CMS exclusion is seen to be fully consistent with this.

seen as physics beyond the SM. But it should be cautioned that this class of effects can be fully described by non-renormalizable dimension-5 operators of the form $HH\bar{L}_i^c L_j$ [3] where L_i are lepton doublets, and neutrino masses of roughly 10^{-5} to 10^{-1} eV had been anticipated beforehand [3]. In light of all this, why should one move beyond the SM?

There is irrefutable evidence for dark matter, dark energy, and the excess of baryons over anti-baryons in the observable universe, which all need explaining and most likely the introduction of new degrees of freedom. The hierarchy between the EW and Planck scales and the cosmological constant problem present themselves as serious theoretical mysteries. One may also point to the arbitrariness of the SM gauge group, $SU(3)_C \times SU(2)_L \times U(1)_Y$, the way it is represented in the particle spectrum and to the unexplained values (and hierarchies) of the SM parameters. There are even tantalizing hints at a possible unification structure (the E_6 gauge group or a subgroup) and at gauge coupling unification in the minimal supersymmetric SM (MSSM).

In any case, the overriding goal must be to uncover the *principles* underlying the SM. The periodic table of the elements, for example, was a breakthrough, as it provided a better understanding of what were then just random facts of chemistry, and moreover produced successful predictions of missing entries (this is where we are today in elementary particle physics). Even more importantly it served Niels Bohr to argue in favor of the correspondence principle. Incidentally, constructed long before the neutron was discovered it was used to hypothesize it, and thus to add a new dimension to it, which is vaguely reminiscent of present day speculations about supersymmetry (SUSY).

Before discussing some new physics examples in more detail, this may be a good place to quote model-independently the energy scales, Λ_{new} (see table I), which are typically probed by various kinds of observables. In the electron scattering sector one can write

$$(1) \quad \Lambda_{\text{new}} \simeq \frac{1}{\sqrt{\sqrt{2} G_F \Delta Q_W}} = \frac{246.22 \text{ GeV}}{\sqrt{\Delta Q_W}},$$

where G_F is the Fermi constant and ΔQ_W is the combined experimental and theoretical uncertainty in the (generalized) weak charges measured in polarization asymmetries.

TABLE I. – *Typical sensitivities of past, current and future experiments to new physics scales, Λ_{new} . The C_{1j} are the coefficients of model-independent four-Fermi operators with vector couplings to quarks and axial-vector couplings to leptons, with the reverse being true of the C_{2j} .*

Combination of couplings	Λ_{new}	Experiment	Laboratory
$2 C_{2e} \equiv Q_W^e$	3.4 TeV	E158 [4]	SLAC
$2 C_{2e} \equiv Q_W^e$	7.5 TeV	MOLLER [5]	JLab
$2 (2 C_{1u} + C_{1d}) \equiv Q_W^p$	4.6 TeV	Qweak [6]	JLab
$2 (2 C_{1u} + C_{1d}) \equiv Q_W^p$	6.3 TeV	P2 [7]	Mainz
$2 (2 C_{1u} - C_{1d}) + 1.68 (2 C_{2u} - C_{2d})$	2.5 TeV	PVDIS [8] & SoLID [9]	JLab
a_μ	3.8 TeV	E821 [10]	BNL
d_e	83 TeV	^{205}Tl EDM [11]	Berkeley
$\mu \rightarrow e$	300 TeV	SINDRUM II (Au) [12]	PSI

Dimension-5 electromagnetic dipole moment operators are defined with help of the effective Lagrangian, $\mathcal{L} = 1/2(D\bar{\psi}\sigma_{\mu\nu}P_R\psi + \text{H.c.})F^{\mu\nu}$, where the anomalous magnetic moments (MDMs), a , are given in terms of $\Re e D = ea/(2m)$, and electric dipole moments (EDMs) can be defined by $d = \Im m D$. One then has,

$$(2) \quad \Lambda_{\text{new}} = \frac{m_\mu}{\sqrt{\Delta a_\mu}} \quad \text{and} \quad \Lambda_{\text{new}} = \sqrt{\frac{em_e}{2\Delta d_e}},$$

for the muon MDM and the electron EDM, respectively. These are related to similarly defined flavor transition moments as searched for in $\mu \rightarrow e$ conversion experiments.

2. – Illustrative example: supersymmetric extensions

Theoretically, SUSY plays a central role in particle physics, which is in part because it is the uniquely possible extension of the Poincaré group. SUSY is also the only way to couple massless spin 3/2 particles in much the same sense as massless spin 1 and spin 2 particles need gauge and local Lorentz symmetries, respectively. Finally, SUSY provides an elegant solution to the hierarchy problem, a property which may also be useful to stabilize possible large extra dimensions. From the observational point of view one may point to the fairly solid prediction for a light Higgs exactly as allowed by fig. 1, to natural radiative EW symmetry breaking for realistic values of m_t , and to the fact that the lightest supersymmetric particle is a viable dark matter candidate (if stable).

However, at least in its minimal (MSSM) version SUSY has some problems, among the most pressing ones the so-called μ -problem [13] (a remnant of the hierarchy problem) and the fact that dimension-4 proton decay is not disallowed through an accidental symmetry as in the SM, which has to be seen as a step backwards. One needs to introduce 105 new free parameters, plus additional ones if an *ad hoc* R -symmetry is broken or if there are non-holomorphic SUSY breaking terms. It is also unknown how SUSY is broken and how the breaking might be mediated from some hidden sector to our observable world. Finally, the non-observation of superpartners and extra Higgs particles is discouraging and gives rise to what is called the little hierarchy problem, *i.e.*, the re-emergence of the need for some parameter tuning. One may thus treat the MSSM as an important

reference model when analyzing and interpreting experimental data, but one may expect additional ingredients to solve its problems (such as extra gauge symmetries).

3. – $g_\mu - 2$

The experimental value [10] of a_μ can be written as

$$(3) \quad a_\mu^{\text{exp}} \equiv \frac{g_\mu - 2}{2} = \frac{\alpha}{2\pi} + (4511.17 \pm 0.63) \times 10^{-9},$$

giving rise to a discrepancy with theory, $a_\mu^{\text{exp}} - a_\mu^{\text{th}} = (2.88 \pm 0.80) \times 10^{-9}$ (or 3.6σ), when a SM prediction based on data from $e^+e^- \rightarrow \text{hadrons}$ is used for the 2-loop vacuum polarization contribution of $\Delta a_\mu(e^+e^-) = (69.23 \pm 0.42) \times 10^{-9}$ [14]. A smaller deviation, $a_\mu^{\text{exp}} - a_\mu^{\text{th}} = (1.96 \pm 0.83) \times 10^{-9}$ (2.4σ), is seen if data from $\tau \rightarrow \nu_\tau + \text{hadrons}$ are used (where possible) instead, $\Delta a_\mu(\tau) = (70.15 \pm 0.47) \times 10^{-9}$ [14]. The conflict between the two data sets is $\Delta a_\mu(\tau) - \Delta a_\mu(e^+e^-) = (0.91 \pm 0.50) \times 10^{-9}$ or 1.8σ . Averaging yields $\Delta a_\mu(\text{average}) = (69.61 \pm 0.36) \times 10^{-9}$ and a deviation, $a_\mu^{\text{exp}} - a_\mu^{\text{th}} = (2.50 \pm 0.77) \times 10^{-9}$ (or 3.2σ). Note that this hadronic correction is correlated with the Z pole value of α and the low-energy weak mixing angle, $\sin^2 \theta_W(0)$, and thus with M_H . This connection has also been discussed in the context of new physics [15].

The above results include an additional uncertainty from hadronic 3-loop light-by-light scattering diagrams which contribute, $\Delta a_\mu(\gamma \times \gamma) = (1.05 \pm 0.26) \times 10^{-9}$ [16]. This is consistent with the 95% CL upper bound, $\Delta a_\mu(\gamma \times \gamma) < 1.59 \times 10^{-9}$, found in ref. [17].

One may point out that if the three dominant errors from experiment (6.3×10^{-10}), hadronic vacuum polarization (3.6×10^{-10}) and light-by-light scattering (2.6×10^{-10}) can be pushed below 3×10^{-10} , then a 5σ discovery would be established (if the central value persists). The $\Delta a_\mu(\gamma \times \gamma)$ error is already there, but it is also the hardest to defend.

While the EW contribution is smaller than the current discrepancy, contributions from SUSY [18] with EW scale superpartners may still account for the effect as they may be enhanced by $\tan \beta$, the ratio of the vacuum expectation values of the two Higgs doublets. Within a global SUSY analysis of EW precision data including $g_\mu - 2$ [19] it has been shown recently that the most plausible scenario is that loop diagrams containing a muon-sneutrino, a wino and a charged Higgsino, dominate [20]. This can be achieved already at moderately large $\tan \beta \sim 10$. These results are not directly affected by the non-observation of colored superpartners with masses up to about 1 TeV at the LHC [2].

4. – Practical example: gauge extensions

Z' bosons [21] are among the best motivated kinds of physics beyond the SM. They easily appear in top-down scenarios like Grand Unified Theories or superstring constructions. In fact, it often requires extra assumptions if one wants to *avoid* an additional $U(1)'$ gauge symmetry or decouple the associated Z' from observation. This is even more true in bottom-up approaches where $U(1)'$ symmetries are a standard tool to alleviate problems in models of dynamical symmetry breaking, supersymmetry, large or warped extra dimensions, little Higgs, etc. And as all these models are linked to electroweak symmetry breaking, the Z' mass, $M_{Z'}$, should be in the TeV region, providing a rationale why they might be accessible at current or near future experiments.

Z' discovery would most likely occur as an s -channel resonance at a collider, but interference with the photon or the standard Z provides leverage also at lower energies.

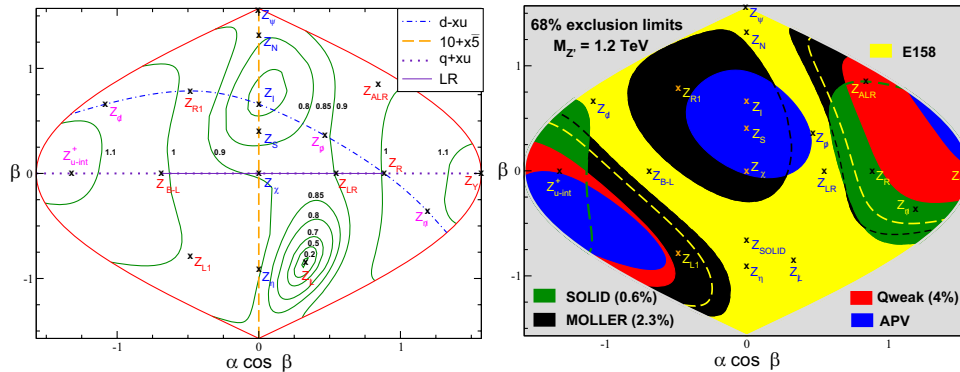


Fig. 2. – Constraints on the E_6 parameters α and β . Left: 95% CL contour lines of $M_{Z'}$ exclusions (in TeV) [23] exemplified by the CDF di-muon data [24]. Right: 68% exclusion constraints for $M_{Z'} = 1.2$ TeV from various actual and hypothetical low-energy measurements.

Once discovered at a collider, angular distributions may give an indication of its spin to discriminate it against states of spin 0 (*e.g.*, the sneutrino) and spin 2 (like the Kaluza-Klein graviton in extra dimension models). The diagnostics of its charges would be of utmost importance as they can hint at the underlying principles.

An interesting class of models is related to E_6 , a plausible gauge group for unified model building. All representations of E_6 are free of anomalies so that its $U(1)'$ subgroups correspond to Z' candidates. Z' bosons with the same charges for the SM fermions as in E_6 also arise within a bottom-up approach [22] when anomaly cancellation is demanded in supersymmetric extensions of the SM together with a set of fairly general requirements. The breaking chain, $E_6 \rightarrow SO(10) \times U(1)_\psi \rightarrow SU(5) \times U(1)_\chi \times U(1)_\psi$, defines a 2-parameter class of models, $Z' = \cos \alpha \cos \beta Z'_\chi + \sin \alpha \cos \beta Z'_Y + \sin \beta Z'_\psi$, where Y denotes hypercharge, and $\alpha \neq 0$ corresponds to the presence to a kinetic mixing term $\propto F_Y^{\mu\nu} F'_{\mu\nu}$.

5. – Parity violation in electron scattering, atoms and ions

Figure 2 shows how collider data and low-energy constraints from existing and future polarized electron scattering experiments and atomic parity violation (APV) provide complementary information on the parameters introduced in the previous section. Notice, that the combined data from e^- scattering alone may cover the entire parameter space (for future measurements it is assumed that the central values will coincide with the SM).

Figure 3 illustrates this complementarity in different contexts. The left-hand side shows the Z' coupling strength, g' , as a function of $M_{Z'}$. Collider data produce a stronger $M_{Z'}$ dependance, but there is no resemblance of a sharply edged shape [23] as one might naively expect from di-muon bump hunting. The EW precision data (EWPD) result in weaker $M_{Z'}$ dependance and stronger exclusions at large g' . The right-hand side of fig. 3 shows the scale dependance of $\sin^2 \theta_W$. Collider experiments measure Z couplings with great precision but are virtually blind to new physics amplitudes. They serve to fix the position of the curve. The converse is true of electron scattering and APV (and also of a possible experiment [26] in a single trapped Ra ion).

It should be stressed that these experiments provide determinations of $\sin^2 \theta_W$ that are competitive with the Z pole, and that they are also sensitive to supersymmetry, especially when R -parity is broken [27].

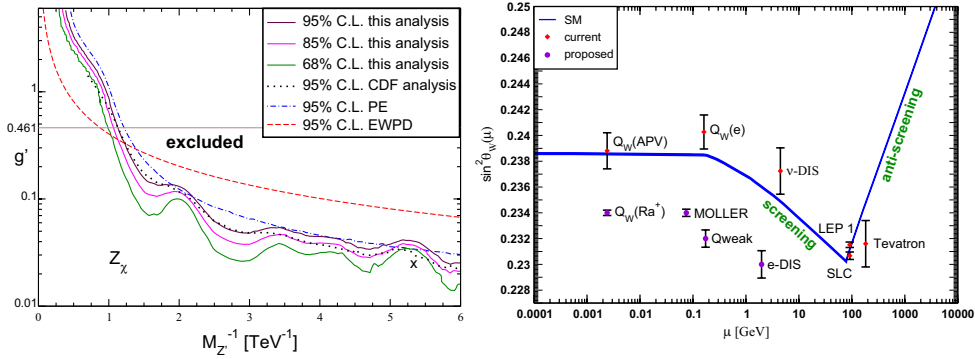


Fig. 3. – Left: EWPD are sensitive to different regions in Z' coupling *vs.* mass, as is best seen by comparing with pseudo-experiments (PE). The wiggles in the lines denoted “this analysis” (which refers to ref. [23]) and the softer ones from CDF (which is based on the same data but a different statistical method) are from actual fluctuations in the data. Right: various current and future measurements of the running weak mixing angle. The uncertainty in the prediction is small except possibly in the hadronic transition region roughly between 0.1 and 2 GeV [25].

6. – Electric Dipole Moments

In any relativistic theory permanent EDMs (for a review, see ref. [28]) of half-integer spin systems violate time-reversal symmetry [29], and in any relativistic quantum field theory they violate parity (P) and charge-parity (CP), as well. Unlike the complex phase in the CKM matrix, CP violation (CPV) due to EDMs is not related to flavor change. CPV from the CKM matrix is too small to produce the baryon asymmetry of the universe which is an important observational piece of data in support of physics beyond the SM and is —as far as we know— independent of the hierarchy problem, dark matter and dark energy. At the same time, the CKM mechanism is also unable to produce EDMs large enough to be observable in the foreseeable future. On the other hand, new particles beyond the SM tend to give rise to new operators generally adding many complex phases and to EDMs too large to be consistent with current limits (CP problems).

There is a second mechanism for CPV in the SM in form of the so-called QCD θ -term,

$$(4) \quad \mathcal{L}_{\bar{\theta}} = \bar{\theta} \frac{g_s^2}{32\pi^2} G_{\mu\nu}^a \tilde{G}_{\mu\nu}^a,$$

which is a total derivative and also violates P and CP. It affects EDMs of hadrons which can be estimated in chiral perturbation theory. The proton and neutron EDMs, d_p and d_n , are dominated by chiral logarithms [30] while these cancel to leading order for the deuteron. The same kind of logarithms enter chromo-electric and gravitational dipole moments. A recent chiral perturbation theory calculation [31] resulted in $|d_n| \approx |d_p| \approx 2.1 \times 10^{-3} \bar{\theta} \text{ e fm}$. The experimental limit [32], $|d_n| < 2.9 \times 10^{-13} \text{ e fm}$, then gives the bound, $\bar{\theta} \lesssim 10^{-10}$. The unexplained smallness of $\bar{\theta}$ is known as the strong CP problem.

EDMs strongly constrain models and parameters beyond the SM including those motivated by baryogenesis, but is the absence of any non-vanishing EDM already a problem

for baryogenesis itself? This question has been addressed in a simple toy model [33, 34],

$$(5) \quad \mathcal{L} = \frac{(H^\dagger H)^3}{\Lambda_{CP}^2} + Z_t(H^\dagger H)\bar{Q}_3 H t,$$

with the result that a realistic baryon density η_B of $\mathcal{O}(10^{-10})$ can be achieved if Λ_{CP} is between 400 and 800 GeV. Since the next generation of EDM experiments will probe $\Lambda_{CP} \sim 3$ TeV, this shows that the simplest scenarios will be excluded if no EDM is seen.

* * *

It is a pleasure to thank the organizers for the invitation and an enjoyable workshop. I also like to thank EDUARDO ROJAS for creating several plots and also together with PAUL LANGACKER and SHOAIB MUNIR for collaboration on some of the topics presented here. This work was supported by CONACyT project 82291-F and by PASPA (DGAPA-UNAM).

REFERENCES

- [1] PRESCOTT C. Y. *et al.*, *Phys. Lett. B*, **77** (1978) 347.
- [2] DEL RE D., these proceedings.
- [3] WEINBERG S., *Phys. Rev. Lett.*, **43** (1979) 1566.
- [4] SLAC E158 Collaboration: ANTHONY P. L. *et al.*, *Phys. Rev. Lett.*, **95** (2005) 081601.
- [5] MAMMEI J., these proceedings.
- [6] MYERS K., these proceedings.
- [7] MAAS F., talk presented at this conference.
- [8] ZHENG X., these proceedings.
- [9] REIMER P. E., these proceedings.
- [10] Muon ($g-2$) Collaboration: BENNETT G. W. *et al.*, *Phys. Rev. D*, **73** (2006) 072003.
- [11] REGAN B. C. *et al.*, *Phys. Rev. Lett.*, **88** (2002) 071805.
- [12] SINDRUM II Collaboration: BERTEL W. H. *et al.*, *Eur. Phys. J. C*, **47** (2006) 337.
- [13] KIM J. E. and NILLES H. P., *Phys. Lett. B*, **138** (1984) 150.
- [14] DAVIER M., HOECKER A., MALAESCU B. and ZHANG Z., *Eur. Phys. J. C*, **71** (2011) 1515.
- [15] PASSERA M., MARCIANO W. J. and SIRLIN A., *Phys. Rev. D*, **78** (2008) 013009.
- [16] PRADES J., DE RAFAEL E. and VAINSHTEIN A., e-print arXiv:0901.0306 [hep-ph].
- [17] ERLER J. and TOLEDO SÁNCHEZ G., *Phys. Rev. Lett.*, **97** (2006) 161801.
- [18] ELLIS J. R., HAGELIN J. S. and NANOPOULOS D. V., *Phys. Lett. B*, **116** (1982) 283.
- [19] ERLER J. and PIERCE D. M., *Nucl. Phys. B*, **526** (1998) 53.
- [20] CHO G. C. *et al.*, e-print arXiv:1104.1769 [hep-ph].
- [21] LANGACKER P., *Rev. Mod. Phys.*, **81** (2009) 1199.
- [22] ERLER J., *Nucl. Phys. B*, **586** (2000) 73.
- [23] ERLER J., LANGACKER P., MUNIR S. and ROJAS E., e-print arXiv:1103.2659 [hep-ph].
- [24] CDF Collaboration: AALTONEN T. *et al.*, *Phys. Rev. Lett.*, **102** (2009) 091805.
- [25] ERLER J. and RAMSEY-MUSOLF M. J., *Phys. Rev. D*, **72** (2005) 073003.
- [26] WILLMANN L., talk presented at this conference.
- [27] RAMSEY-MUSOLF M. J. and SU S., *Phys. Rept.*, **456** (2008) 1.
- [28] POSPELOV M. and RITZ A., *Ann. Phys. (N.Y.)*, **318** (2005) 119.
- [29] WEINBERG S., *The Quantum Theory of Fields*, Vol. **1** (Cambridge University Press) 1995.
- [30] CREWETHER R. J. *et al.*, *Phys. Lett. B*, **88** (1979) 123.
- [31] MEREGHETTI E. *et al.*, *Phys. Lett. B*, **696** (2011) 97.
- [32] BAKER C. A. *et al.*, *Phys. Rev. Lett.*, **97** (2006) 131801.
- [33] GROJEAN C., SERVANT G. and WELLS J. D., *Phys. Rev. D*, **D71** (2005) 036001.
- [34] HUBER S. J., POSPELOV M. and RITZ A., *Phys. Rev. D*, **75** (2007) 036006.